



55个酒吧

高迪国际出版有限公司 编
大连理工大学出版社

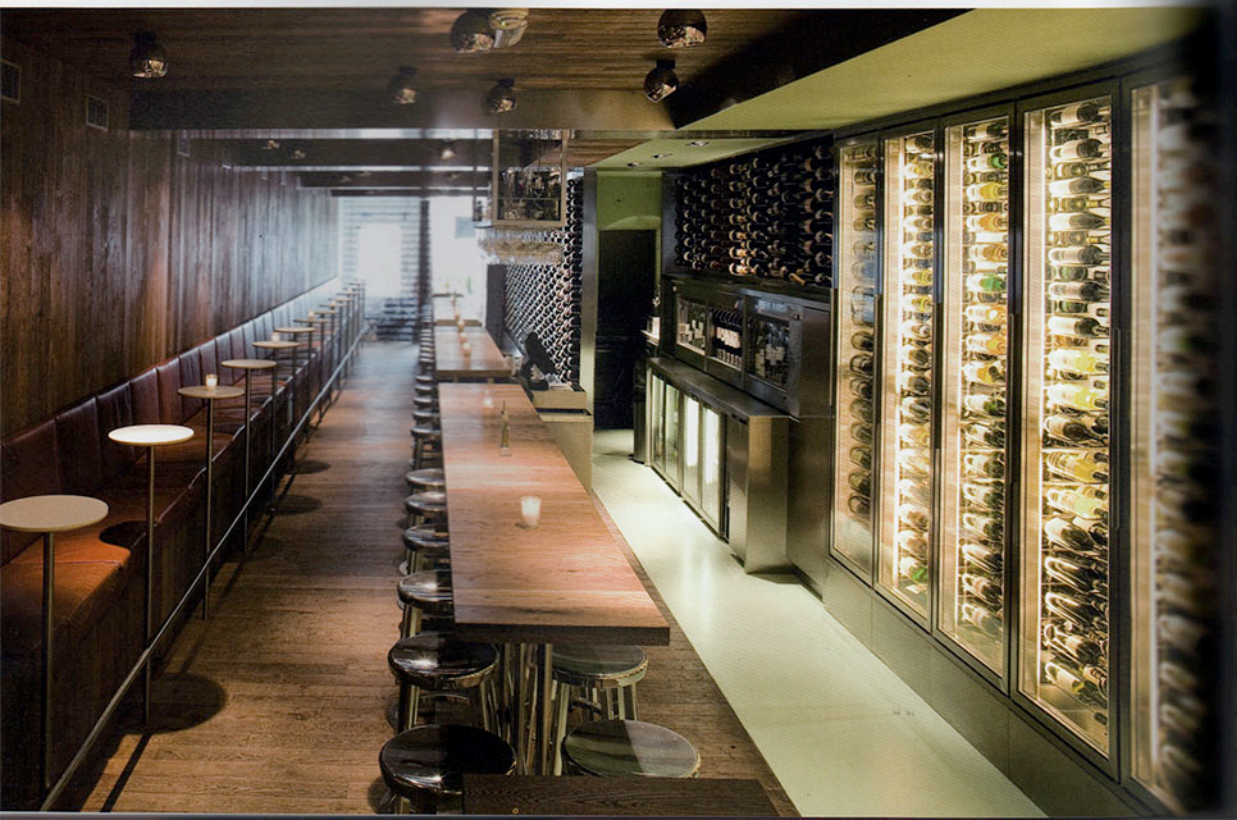


Designers: Rob Wagemans, Janpaul Scholtmeijer, Charlotte van Mill, Erik van Dillen
Design Company: Concrete Architectural Associates
Location: Prinsengracht 411 1016 HM, Amsterdam
Area: 125 m²
Photographers: Ewout Huibers, www.ewout.tv; Concrete Architectural Associates

VYNE consists of two parts. On the right-hand side is the “brown café”, with oak floor, walls and ceiling and a long brown leather couch against the wall. This room is reminiscent of the classic French wines, the oak planks serving to give the impression that one is sitting in a wine vat. The left side serves as a wine library, an entire wall of stainless steel elements parts completely filled with wine bottles. The clinical look melds well with new wines from Chili, and Africa; new wines that are often produced using modern technology. Long bar tables adorn the centre, providing a cozy, Burgundian and lively atmosphere and offering places for approximately 100 people. VYNE also offers a peek in the kitchen, which has a “chef’s table” where a

tasting can be held.

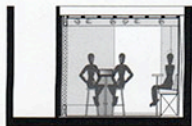
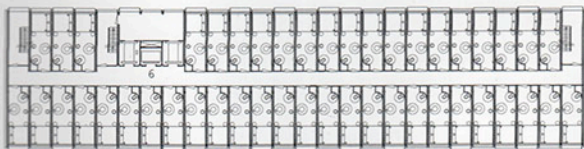
In the oak ceiling the lighting is provided by random placed chandeliers and Bolsters, which makes the lighting dynamic and theatrical. While VYNE is easily recognizable as a “sister” to Envy, at the same time it has its own character and atmosphere. Even the name VYNE, in the form of an anagram, is a playful reminder of Envy. While Envy is about food with wine, VYNE will be offering its guests the opportunity to try the ultimate wine-food combinations. The name also indicative of VYNE’s international character, and the fusion of English words “fine” and “wine” provides an excellent illustration of the concept.







- 1 covered course
- 2 entrance
- 3 check-inn
- 4 canteen M
- 5 livingrooms
- 6 elevators
- 7 supply
- 8 artwork
- 9 screenline inside glasspanel
- 10 luminaire
- 11 double glazing with -5, -2, 0, 2, 5 degree inclination
- 12 black rubber cover fillet
- 13 black-out outrain
- 14 gypsum fibre board
- 15 steelconstruction module
- 16 zebrano floor/ceiling
- 17 aluminium window frame, silver/metallic; depth: 250, 350, 450 mm
- 18 black coated composition
- 19 aluminium window frame
- 20 window blind
- 21 flooring: bamboo parquet/floating floor/ belgian bluestone



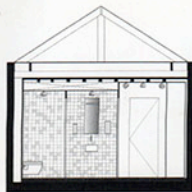
section D



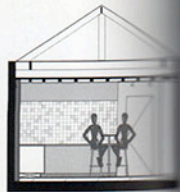
section E



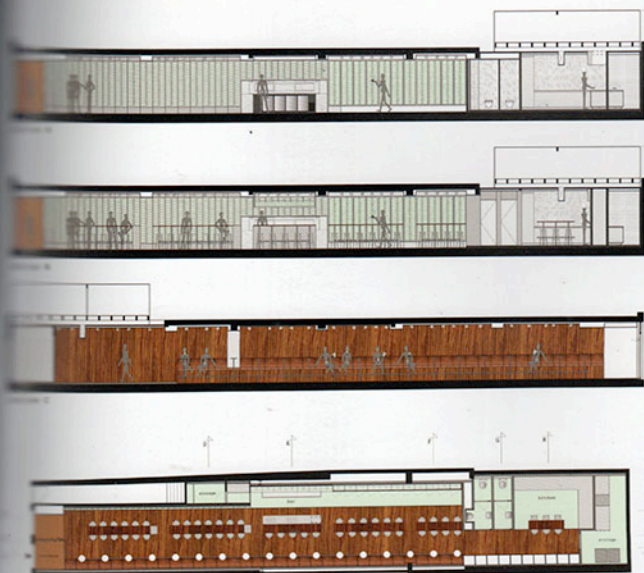
section F



section G



section H



维尼由两部分构成。右边的是“棕”酒吧，店内装饰有橡木地板、墙面和天花板，靠墙摆放着长长的棕色皮革沙发。橡木板人觉得自己仿佛置身于巨大的红酒桶内，整个房间让人想起古典的法国红酒。左边是一面红酒展示墙，整面墙上的不锈钢架上摆满了红酒瓶。硬朗外观与来自智利和非洲的新产红酒相得益彰。新产红酒通常都是使用现代工艺酿制的。长长的吧台位于酒吧中央，营造了一种活泼舒适的勃艮第风格，可容纳将近100人。维尼也配备有厨房，在那儿有“主厨餐桌”，可以举行品酒会。

橡木质天花板随意安置的铭灯具为酒吧提供照明，使得房间的光线显得跳跃而具有剧院风格。

维尼很容易被当成是恩维酒吧的姐妹店，但同时它又具有自己的特点和风格。甚至维尼这个名字都是恩维这个词调皮的变体之作。恩维主要是提供食物和红酒，而维尼则是向客人提供红酒与食品的极致搭配，名字本身也暗示了维尼的国际化特色，“卓越”和“红酒”两个词的融合为酒吧的理念做了非常好的诠释。

The Mansion

Designers: Rob Wagemans, Joris Angevaere, Erik van Dillen
Design Company: Concrete Architectural Associates
Project Architect: Joris Angevaere
Consultant: E & E projectmanagement
Location: Hobbemastraat 2, the Netherlands
Area: 1300 m²
Photographer: Concrete Architectural Associates

The Cocktail Bar

One of the Cocktail Bar's most significant features, is the eight wall high mirrors. These mirrors which are "leisurely" leaning against the walls on either side of this space are framed using the synthetic cornice.

The Bar, is like an old-fashioned ornamented cupboard. The synthetic cornice with translucent backing frames the cupboard. This "picture frame" is backlit by LED lighting and provides a gold glowing light feature in this piece of furniture. In front of this cupboard a lower bar is placed. It is made of chrome steel and in front of it are five tall tables. These tables, with a little square tabletop are part of the bar; they function as pedestals for the presentation of the beautiful cocktails.

The room uses down lights from the ceiling, all placed in a grid to illuminate the tabletops. Other mood lighting is provided by chrome wall lights, with a classic off white lightshade.

All throughout the ground and first floor, the floor is covered by smoked oak wood, in a herringbone pattern.

The Rosé Room

The Rosé Room is quite literally rosé. Draped velour in a skin like pink shade covers the ceiling and walls. This room has a different acoustic feel than other spaces in the building; because of all the fabric in this room, it has a very soft finish.

The cupboard bar again, is one of the main features in this room. The tabletops here are made of Tea Rose Corian; the sides of the tabletops are finished using the synthetic mirror cornice.

Lighting here is provided by down lights in beams across the ceiling.

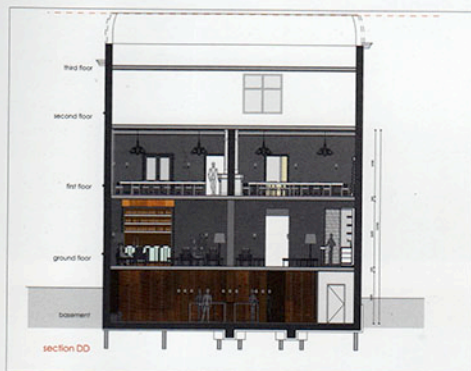
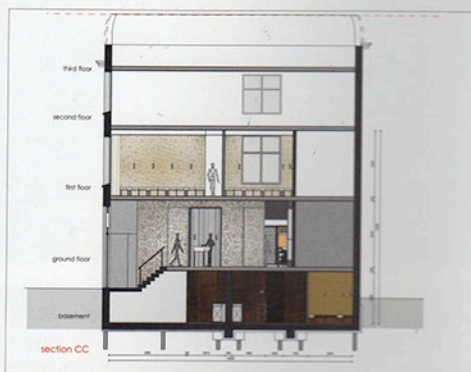
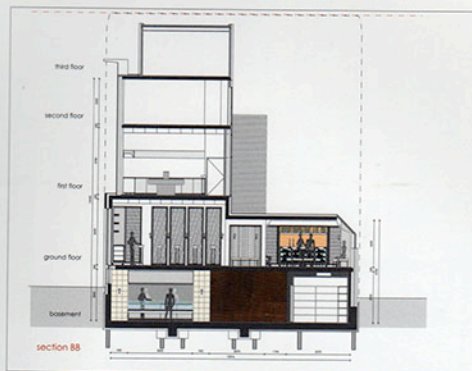
The Black Bar

The Black Bar is a very chic room, with soft black Napa leather classic chairs and seats. Most of the ceiling is covered by two huge images. The image is a modern interpretation of the ceiling in the Sistine chapel. The backlit ceiling is made of a special synthetic material that is used for light cases. Here the glowing ceiling makes the whole space feel very comfortable.

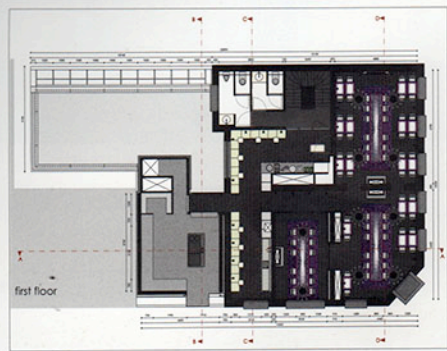
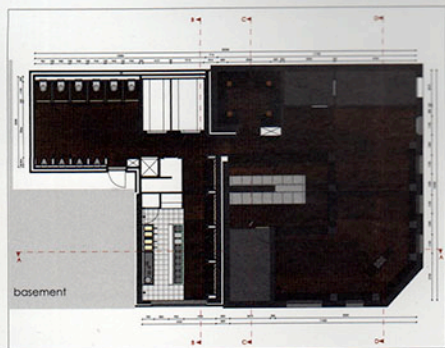
The image used on the ceiling is also used for the carpet. Walls are covered with silver lily patterned wallpaper that is painted black.

To mask the harshness of the outside world, the windows are foiled with a dark grey vinyl and also covered by black lace curtains.













鸡尾酒酒吧

鸡尾酒酒吧最显著的特征之一是它八面如墙高的镜子。这些镜子随意地依靠在空间四周的墙壁上，边框由合成的槽板镶嵌制成。

这间酒吧如同一款旧式的装饰橱柜。合成槽板与透明背板构成了橱柜的边框。这种“相框”由LED灯光照亮，在这款家具上映射出金色的光亮。

在橱柜的前面设置有一个较低的吧台。它是铬钢材质的，在其前面摆放着五个高桌，并配有一个小型的方形桌面，它们作为酒吧的一部分为展示精美的鸡尾酒提供了基座。

这间房间采用射灯照明，所有射灯被摆放在一个格子内，照亮桌面。其他的气氛光源来自铬合金墙灯，营造出一种经典的纯白光影。

整个底层和一楼地面皆由栎木铺置而成，呈人字形图案。

玫瑰厅

玫瑰厅是一间真正意义上的玫瑰之屋。天花板及墙面垂挂着粉色

的丝绒。同本建筑内其他空间相比，这里有着一种不同的声音效果；因为其内部质地非常柔软。

橱柜吧台也是这间房间的主要特色之一。在这里，桌面采用淡橙红色的丽耐材质；桌边由合成镜面槽板装饰。

玫瑰厅的照明是由天花板上的束状灯光提供的。

黑色酒吧

黑色酒吧是一个非常时尚的空间，有柔软的光面皮革制成的经典座椅。大部分天花板被两个巨大的图像覆盖。这个图像是对西新教堂的天花板的现代诠释。背光天花板由一款特殊的合成材质制成，使得整个空间充满了舒适感。

地毯也采用天花板上的图案。墙面覆盖着银色百合图案的墙纸，被绘制成了黑色。

为了隔绝外部世界的纷扰，窗上装饰着深灰色的乙烯基材质，并配有黑色蕾丝窗帘。

W Lounge Bar



Design Company: Concrete Architectural Associates

Location: W Hotel, Leicester Square, London, UK

Project Team: Rob Wagemans, Jeroen Vester, Ulrike Lehner, Erik van Dillen, Melanie Knüwer, Jari van Lieshout, Sonja Wirl, Nina Schweitzer

Lighting Consultant: Maurice Brill Lighting Design

Photographer: Ewout Huiber

This is not so much about the bar; it is the 37 meters chesterfield couch that defines the social landscape for guests and friends to live, meet, and mingle. Everything, including the end-grain oak flooring and gold leaf ceiling, naturally follows the winding landscape. Loose elements cut away from the chesterfield landscape, function as coffee tables and offer a platform to the cylindrical fireplaces that follow the shape of the columns surrounding the couch. The chesterfield defines an important part of British heritage and the way the columns run through the chesterfield suggests the sofa was there long before the modern building was. The lounge bar is a good place to stay at any hour of the day. The striking framework of vertical blinds can be set in different positions and creates different light scenes according to the time of the day and use of the space. In third, loose fragment cut away from the chesterfield landscape has become a golden lit bar. It transforms from a breakfast bar in the morning into a bar at which one can prepare for a wild night out.









W酒吧内的社交场景由一个37米长的切斯特菲尔德大沙发勾勒出，宾客和朋友们可来此享受生活、聚会见面、交往接触。这里的一切，包括端头木纹的橡木地板和金叶天花板，都自然地符合着蜿蜒的景致设计风格。一些分散的元素独立于大沙发场景之外，它们被设计成咖啡桌，并为圆柱形的壁炉提供了底座，这些壁炉与环绕在沙发周围的柱子形状相吻合。切斯特菲尔德市是大不列颠历史的重要组成元素，酒吧里以柱子环绕于沙发周围的方式表明：早在这座现代建筑出现之前，切斯特菲尔德大沙发就存在已久了。一天之中无论何时，W酒吧都是一个好去处。直立式百叶窗非常醒目，可以任意调整其位置，根据不同时间和使用场合营造出不同的光线场景。另一个独立于大沙发场景之外的元素被设计成金色的光吧。清晨的早餐吧在夜晚会变成一个任你彻夜狂欢之地。

WYLD Bar



Design Company: Concrete Architectural Associates

Location: W Hotel, Leicester Square, London, UK

Project Team: Rob Wagemans, Jeroen Vester, Ulrike Lehner, Erik van

Dillen, Melanie Knüwer, Jari van Lieshout, Sonja Wirl, Nina Schweitzer

Lighting Consultant: Maurice Brill Lighting Design

Photographer: Ewout Huibers

When the daily drag is done, guests can dance the night away at WYLD bar. The bar and two-storey high liquor cabinet, with jewel boxes to highlight the selection of drinks, overlook great Leicester Square — heart of the London cinema land. WYLD's interior look combines the red carpet feel with spicy red & black leather furnishings and a grand finale diameter of 3 meters disco ball. A circular booth surrounds bespoke cocktail tables that light up in red. You can stock away glasses and ice inside its stainless steel pockets. The high level walls are covered with black sequins referring to the West End and moving according to the beat of the music. The DJ looks down onto the dancing crowd and when the music starts to play, the sequins wall opens up to create a stage. Adding to the intimacy of the space, fiber optic strings hang from the windows and create a cocoon.





