



Chris van Uffelen

# Creating Shade



Design, Construction, Technology



**BRAUN**



↑ | Terrace

→ | Overview rooftop, circles

## Castell d'Emporda

Girona

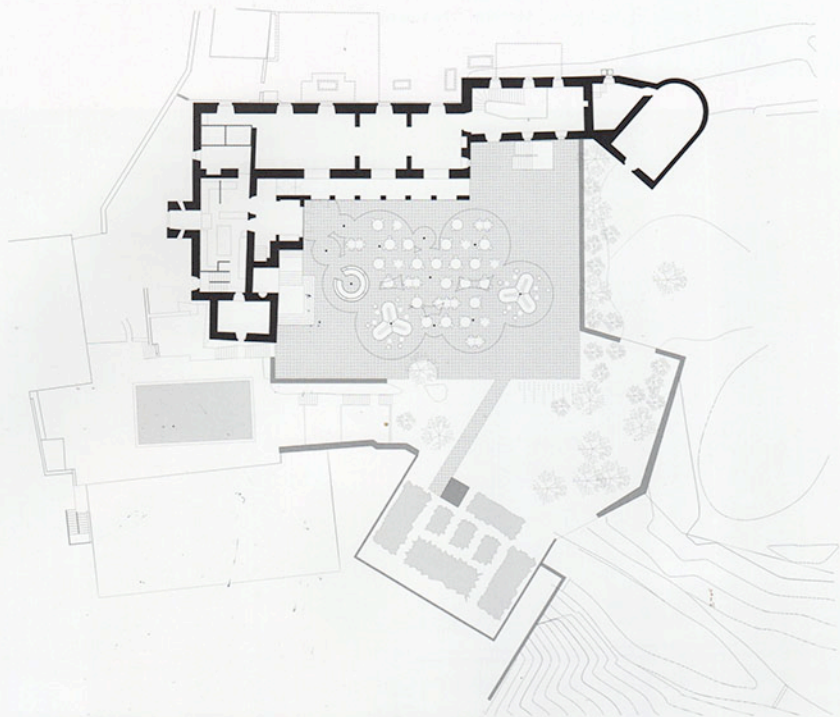
Hotel Castell d'Emporda is located in Girona, Spain and offers a signature restaurant including a large terrace with great views overlooking the surrounding landscape. Concrete designed a roof or covering for this terrace, which also offers the possibility to create an enclosed space with full wind and rain protection. One of the design conditions was to create a covering that works in harmony with the listed building. 12 circles of varying diameters have been placed at random on the terrace. Where the circles touch they fuse together, the open spaces between are filled in with glass. The circular parasol shapes enhance the feeling of being in an outdoor environment on a terrace. The shape of the covering appears as a separate almost temporary element, leaving the ancient building untouched.

Address: 17115 La Bisbal, Girona, Spain. Client: Castell d'Emporda. Completion: 2011. Size: 250 m<sup>2</sup>.  
Main materials: steel, glass. Setting: landscape.



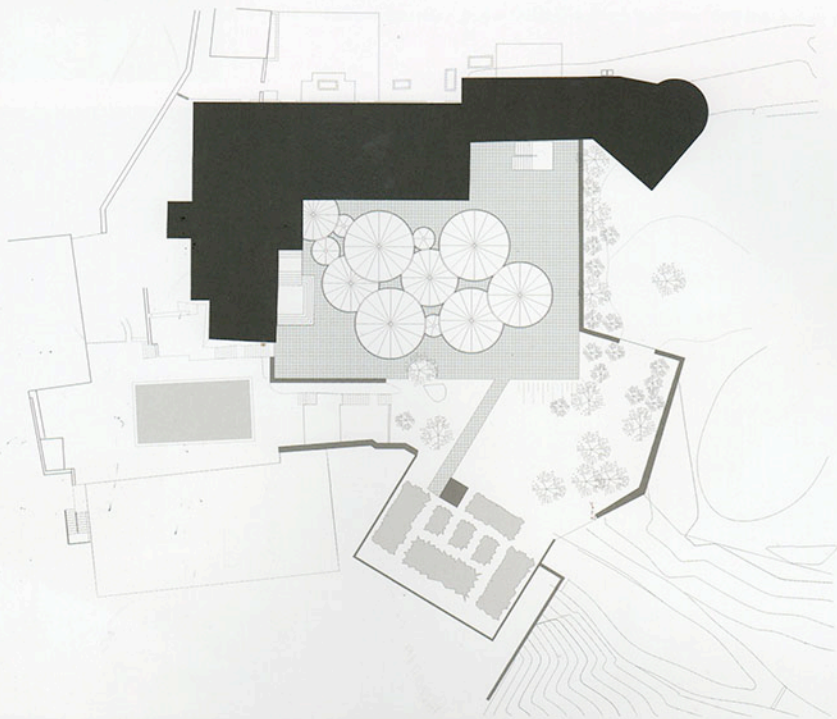
OPAQUE

CONCRETE



↑ | Floor plan, terrace

← | Terrace with seatings



↑ | Floor plan, with roofs  
← | Aerial view